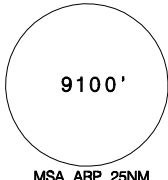
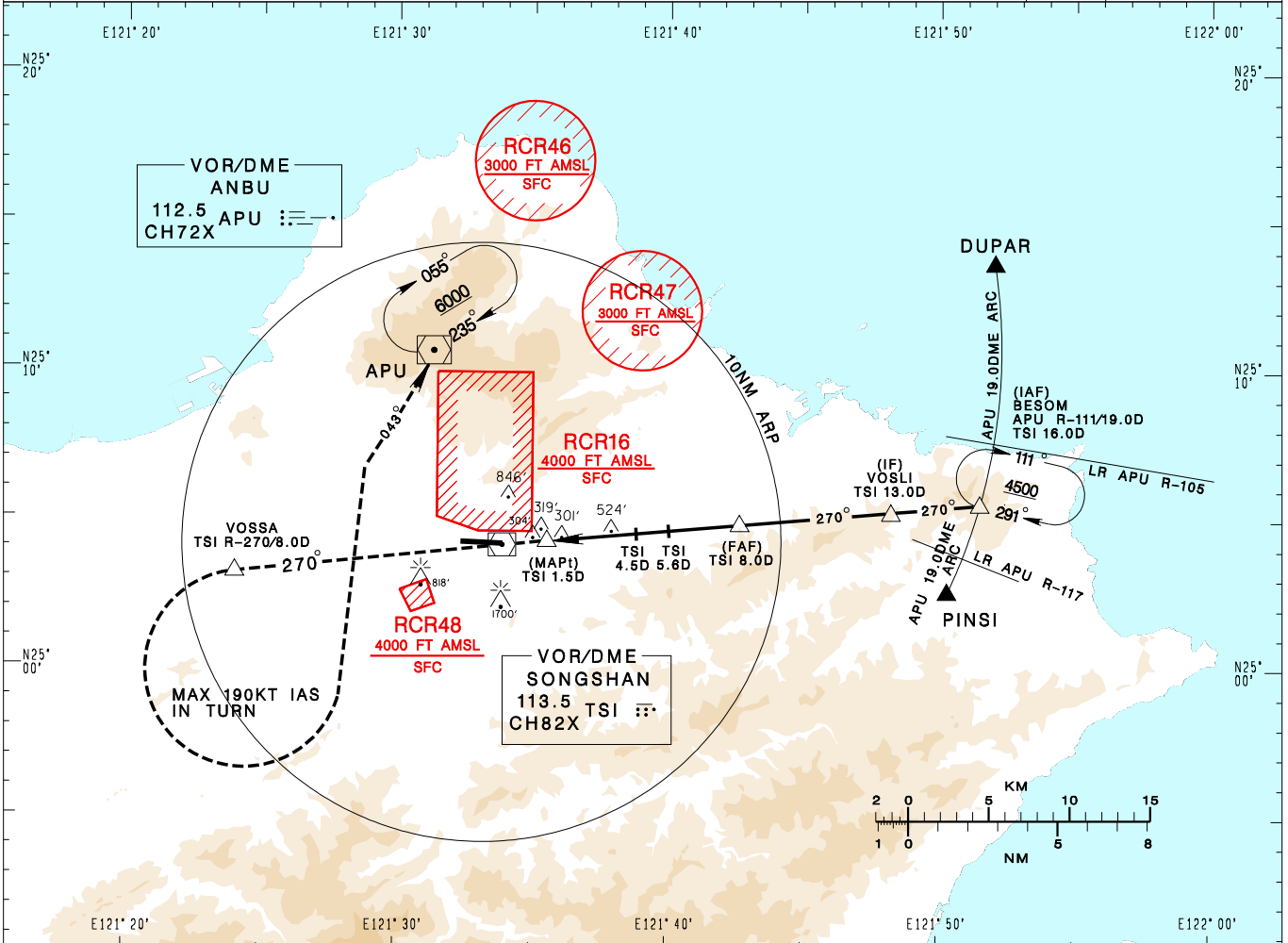


**臺北/松山機場**  
TAIPEI/SONGSHAN AD

RCSS  
VOR RWY28

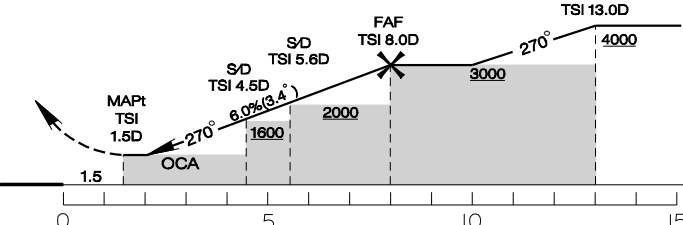
TAIPEI APP 119.7 119.6 125.1	SONGSHAN TWR 118.1	ATIS 127.4 341	 <p>9100'</p> <p>MSA ARP 25NM</p>	
Apt Elev: 18'	Rwy28 THR Elev: 14'	Trans Level: FL130		Trans Alt: 11,000'
BEARINGS ARE MAGNETIC; DISTANCES ARE NAUTICAL MILES; ELEVATIONS, HEIGHTS IN FEET				



DIST to TSI	3.0DME	4.0DME	4.5DME	5.0DME	5.6DME	6.0DME	7.0DME	8.0DME
ADVISORY ALT	1160	1520	1700	1890	2100	2260	2630	3000

MISSED APCH:  
TRACK TSI R-270 TO VOSSA,  
CROSS VOSSA AT OR ABOVE 3000,  
THEN TURN LEFT TO TRACK APU R-223  
TO APU, CLIMB TO 6000 AND HOLD.

\*MISSED APCH TURN LIMITED TO  
190 KT IAS.



MINIMA (OCA IN FT, VIS IN M, OCH IN FT)					<p>NOTE</p> <ol style="list-style-type: none"> <li>FINAL APCH COURSE CROSSES RWY CL EXTENSION AT 0.7NM FROM THR28.</li> <li>DESCENT ANGLE FROM FAF IS 3.4°, NOT COINCIDENT WITH PAPI.</li> <li>CIRCLING ONLY AUTHORIZED FOR CAT A HELICOPTERS.</li> <li>A 1700ft-HIGH BUILDING AT 2.1NM SOUTH OF THR28.</li> <li>A 818ft-HIGH BUILDING AT 2NM SW OF THR10.</li> <li>CAUTION OBSTACLES UP TO 304FT AT 1NM EAST OF THR28 PENETRATE THE VISUAL SEGMENT SURFACE(VSS).</li> <li>ATS SURVEILLANCE REQUIRED.</li> </ol> <p>*DME REQUIRED.</p>
CATEGORY	A	B	C	D	
STRAIGHT IN	800/3600 782				
CIRCLING	1180/3600 1162	N/A			

CHANGES: RCR49 COMPLETELY WITHDRAWN